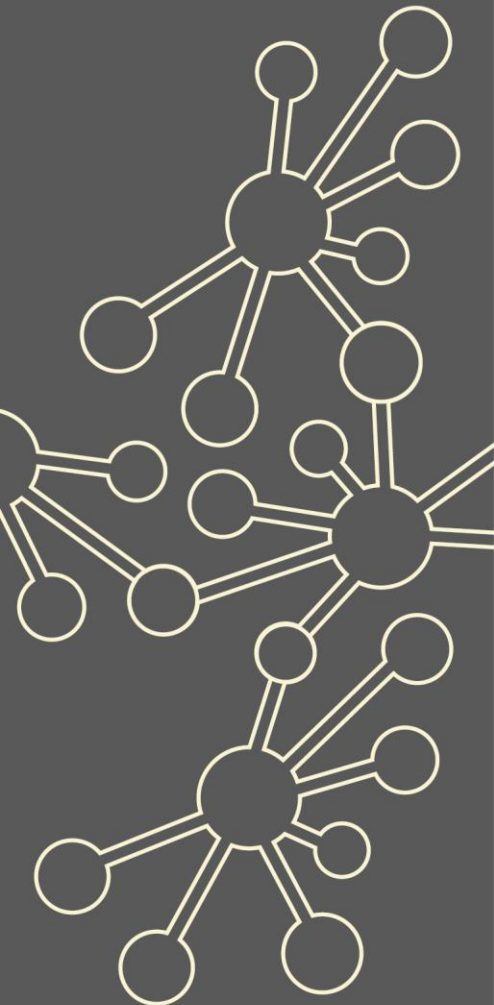


Secondary Subject Leadership

Maths Hubs Network Collaborative Projects 2021/22

NCP21-15



Outline

This new project offers focused support to secondary heads of department/subject leaders, to enable them to better understand and implement teaching for mastery approaches across their department, and to develop in their role as leaders of both student learning and teacher professional development.

It provides an opportunity for participants to deepen their understanding of teaching for mastery approaches, of their wider roles, and of their capacity with their colleagues to transform secondary maths learning.

Details

What is involved?

Local Work Group design will follow a workshop – school-based task cycle, consisting of several workshops followed in each case by school-based tasks planned to take account of the specific contexts of the subject leaders. Participants will support each other through the sharing of strategies and practice within the context of a vibrant professional learning community.

Participants will have opportunities for: networking and input on current issues; exploration of materials to use with their department; development of collaborative approaches; ongoing development in their subject leadership role. It will be important for all Work Group participants to benefit from the expertise and experiences of the group of departments represented.

This programme will take place across the equivalent of three days.

Who can take part?

The project is for secondary heads of department/subject leaders, and is open to heads of department in schools already involved with Maths Hubs and to those who are not yet involved. (Prospective HoDs/subject leaders are not eligible to participate).

Dates:

17th Nov. 21 (Twyford) - 9:30am-2:30pm
3rd Feb. 22 (Online) - 9:30am-2:30pm
25th May 22 (Twyford) - 9:30am-2:30pm

Further details:

This project may be a blended approach (mixture of online and face-to-face) but venue will be:

Twyford Church of England High School,
Twyford Cres, London W3 9PP

Lunch will not be provided but you will have time to go to the local shops or bring your own.

What are the benefits?

Participants will:

- ✓ promote and develop a shared vision for teaching and learning in maths
- ✓ ensure that schemes of work are well established and offer a coherent and connected curriculum
- ✓ develop a coherent and ambitious action plan focused on improving outcomes for students and the needs of teachers
- ✓ develop collaborative ways of working within the department to support ongoing developments
- ✓ lead and manage the department effectively, to promote and develop teaching for mastery approaches

What is the cost?

The Secondary Subject Leadership project is fully funded by the Maths Hubs Programme so is free to participating schools.

The London Central and West Maths Hub reserves the right to charge a £75 fee for non-attendance to the sessions or for cancellations to any of the sessions with less than 1 weeks' notice.

Covid-19 Recovery

Many positive lessons were learnt from online collaboration during Maths Hubs activity in 2020/21. These will be built upon in 2021/22.

As the impact of the pandemic hopefully recedes, the result for Maths Hubs work will be a blend of face-to-face activities and frequent online collaboration.



The wider context

A key aim of the NCETM and Maths Hubs is to develop successful secondary maths departments that are well led and that provide ongoing subject professional development through collaborative working both within and between departments.

To achieve this, it is vital not only that individual teachers develop teaching for mastery approaches, but also that the department as a whole has systems, policies and ways of working which are compatible with teaching for mastery and allow for the collaborative professional development structures which are needed in order to develop and embed these approaches and to sustain them in the long term.

Expectations of participants and their schools

Participants and their schools must be able to commit to the full academic year's programme. This is likely to involve some face-to-face activity alongside online collaboration. This project is expected to extend beyond the first year's Work Groups. In the second and subsequent years of engagement, participants are expected to continue their participation as part of a Maths Hub-led subject leadership community.

About the Hub

London Central and West works across 7 boroughs of London (Brent, Ealing, Harrow, Hammersmith and Fulham, Hounslow, Hillingdon and Kensington and Chelsea). It is one of 40 Maths Hubs in England, working together within the Maths Hub Programme, which began in 2014. To read more about the Maths Hub, please see [here](#).

A Work Group brings senior leaders and maths teachers together multiple times during the school year, rather than just being a one-off course. There is a common aim which is to research, develop, practise and recognise best practice. The emphasis is on collaborative, exploratory, evidence-based professional development.

If you are interested in this Work Group, please email complete the following [Expression of Interest Form](#) and send it to admin@lcwmathshub.co.uk. We will then be able to send you the relevant dates and details of this Work Group for 2021-22.

